

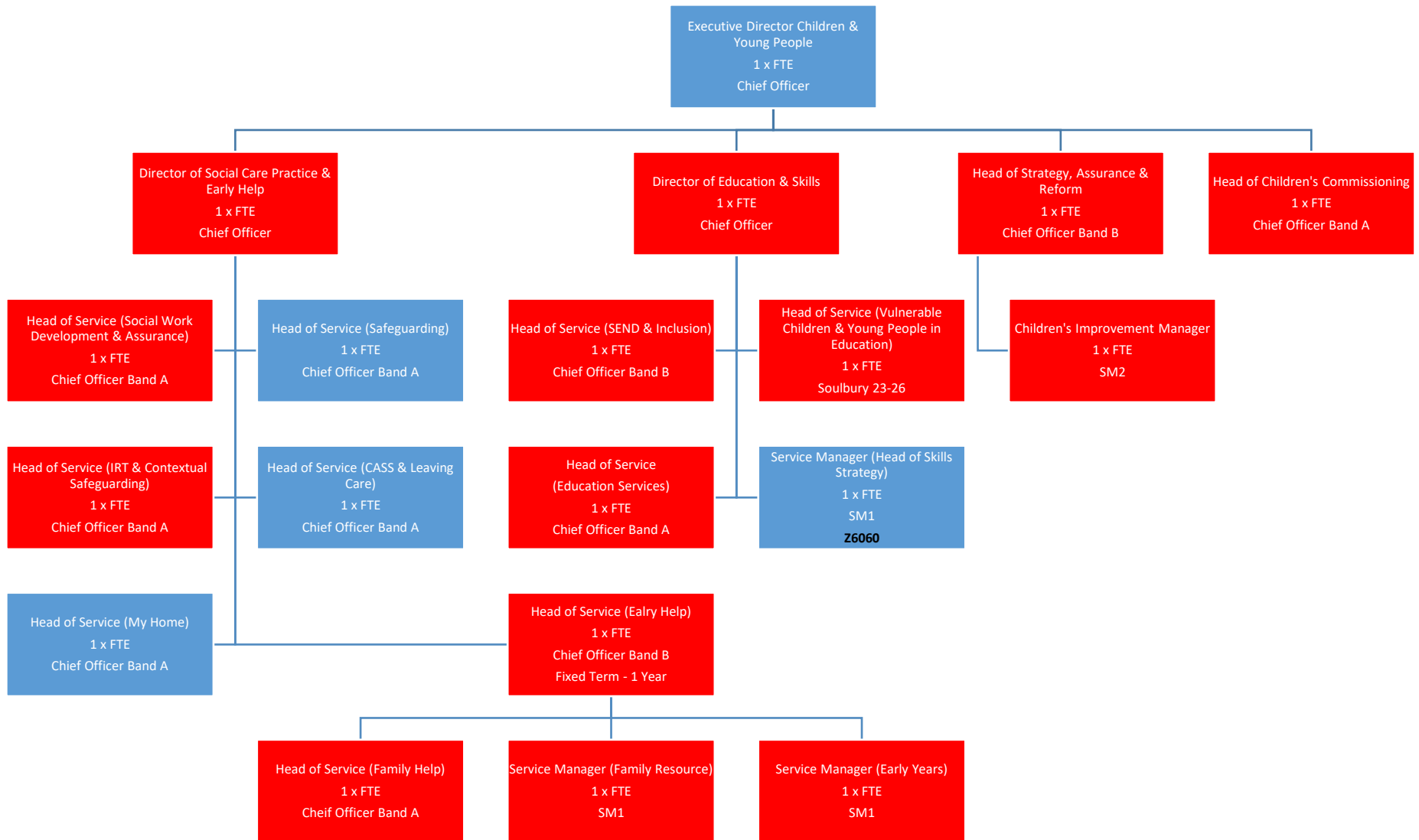
Children & Young People Directorate 2023

Proposed Structure

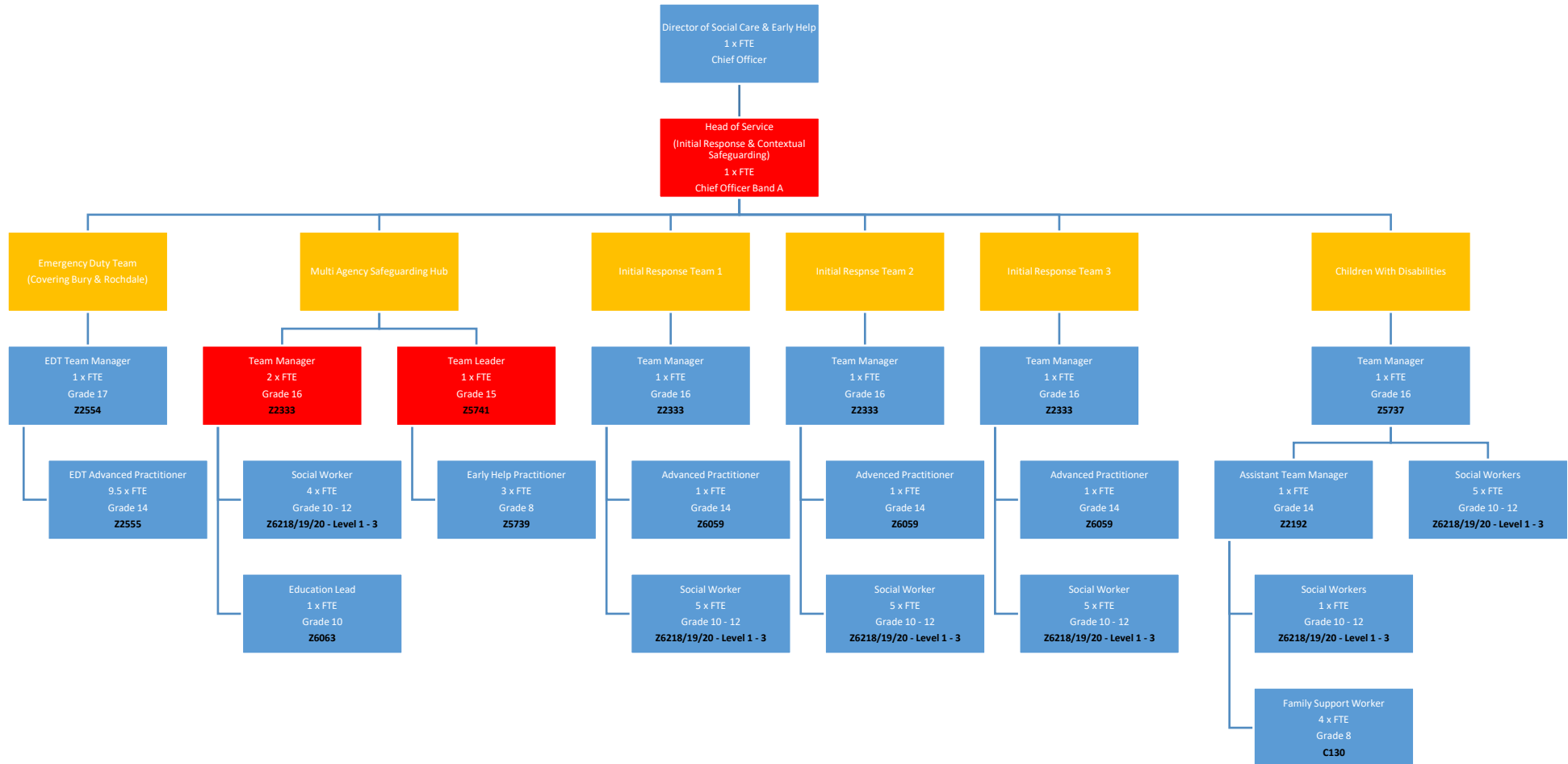
Two Division Model

Posts in Red potentially directly impacted by proposals

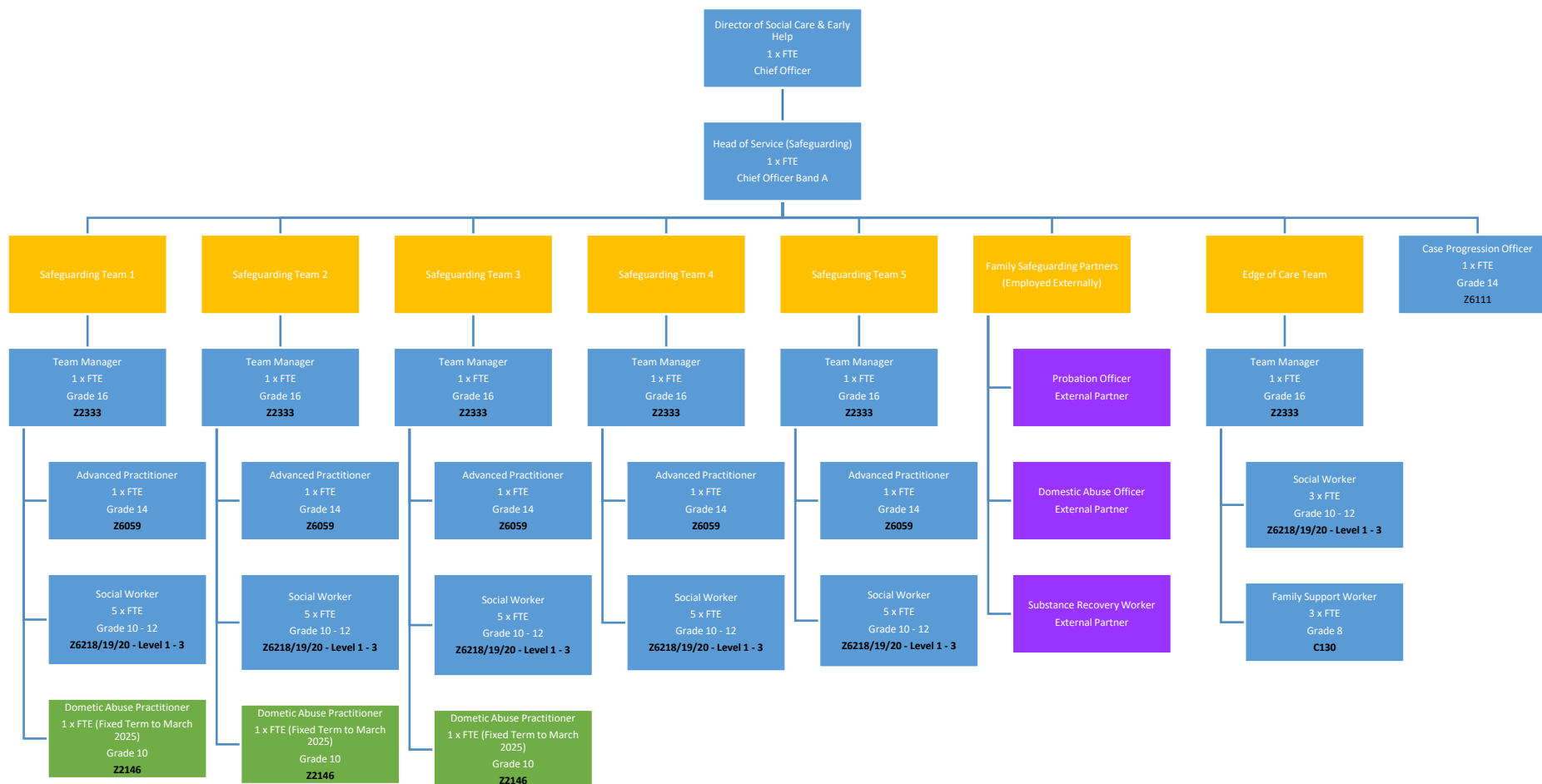
Children & Young People Senior Management



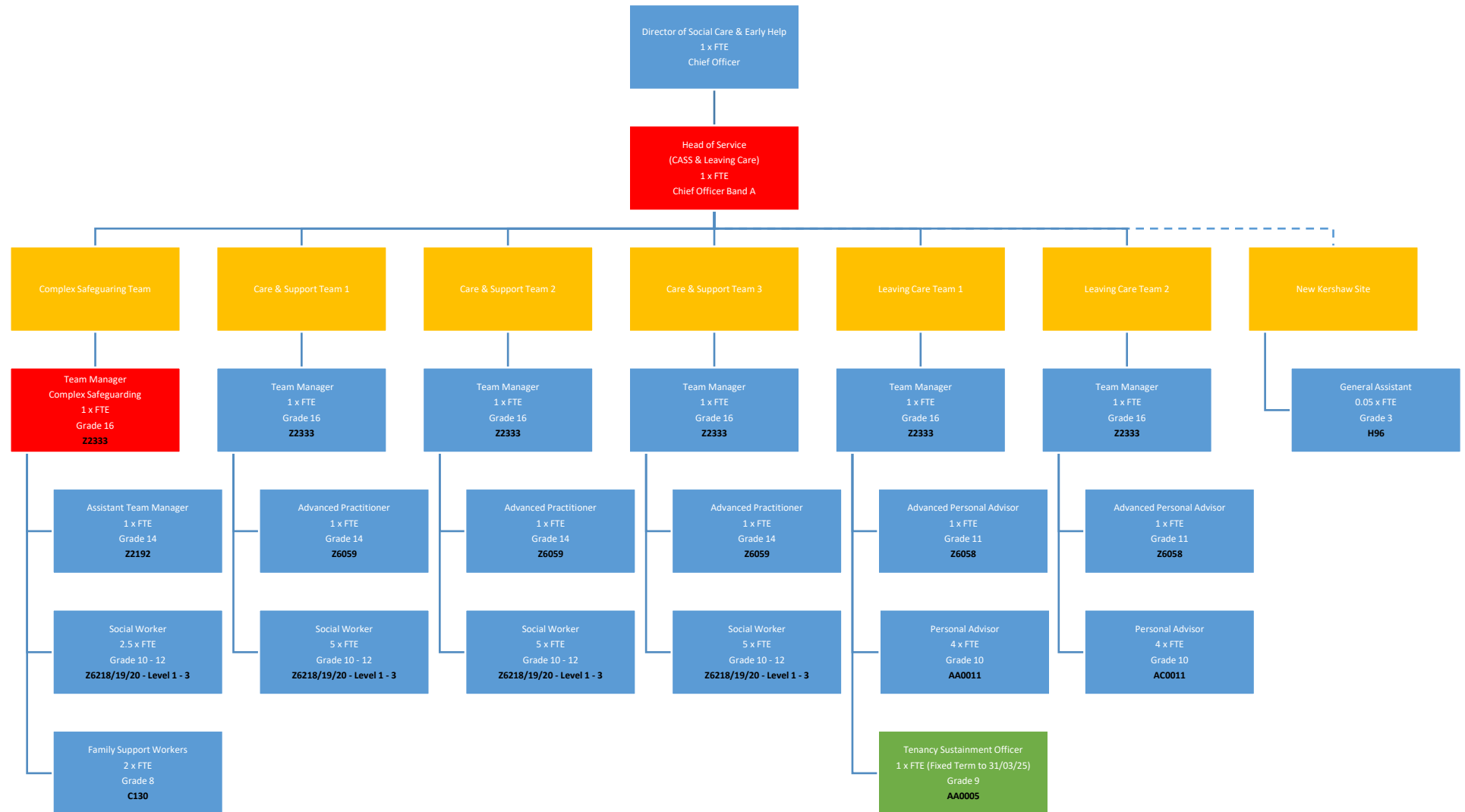
Social Care & Early Help: Initial Response & Contextual Safeguarding



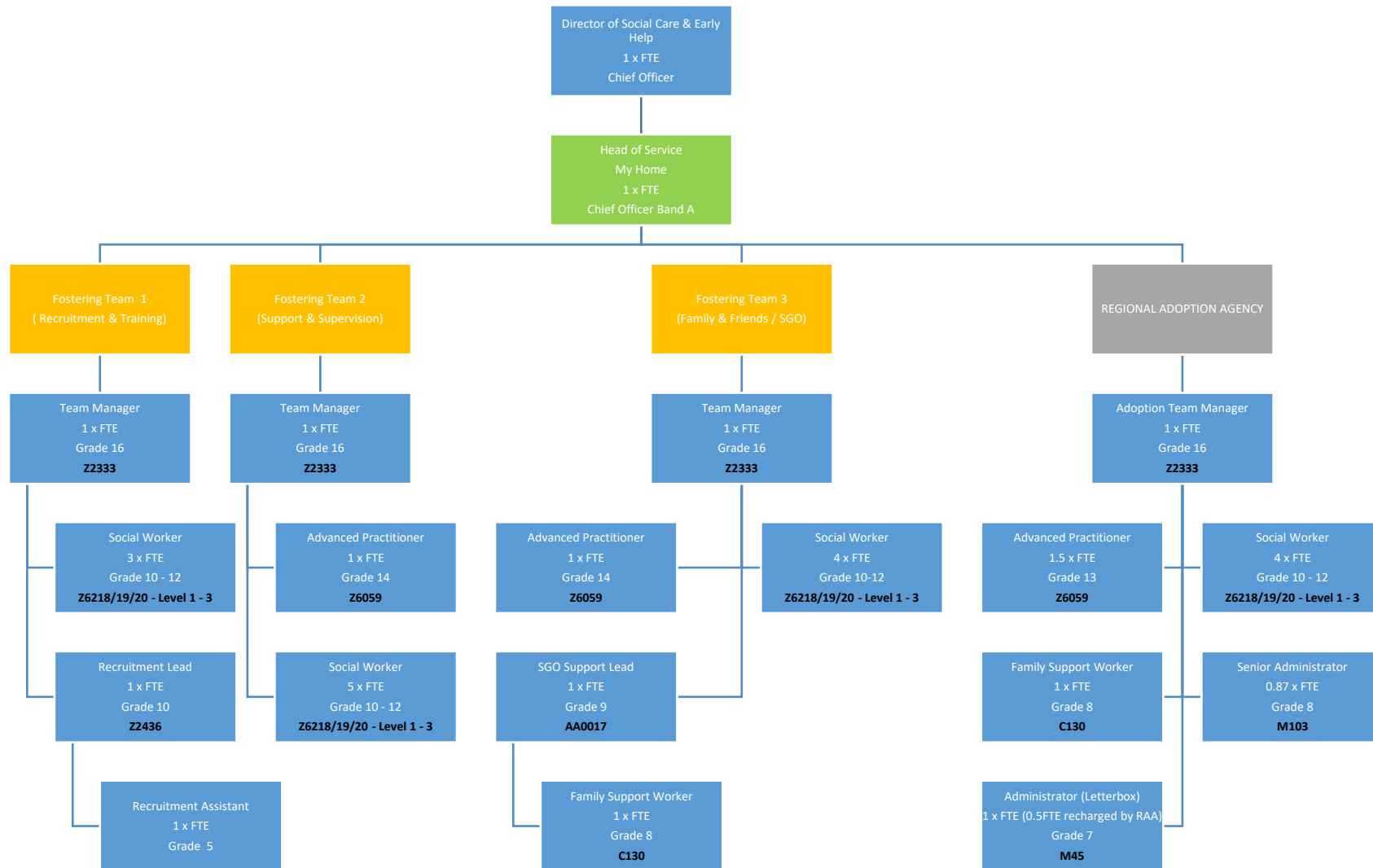
Social Care & Early Help: Safeguarding Service



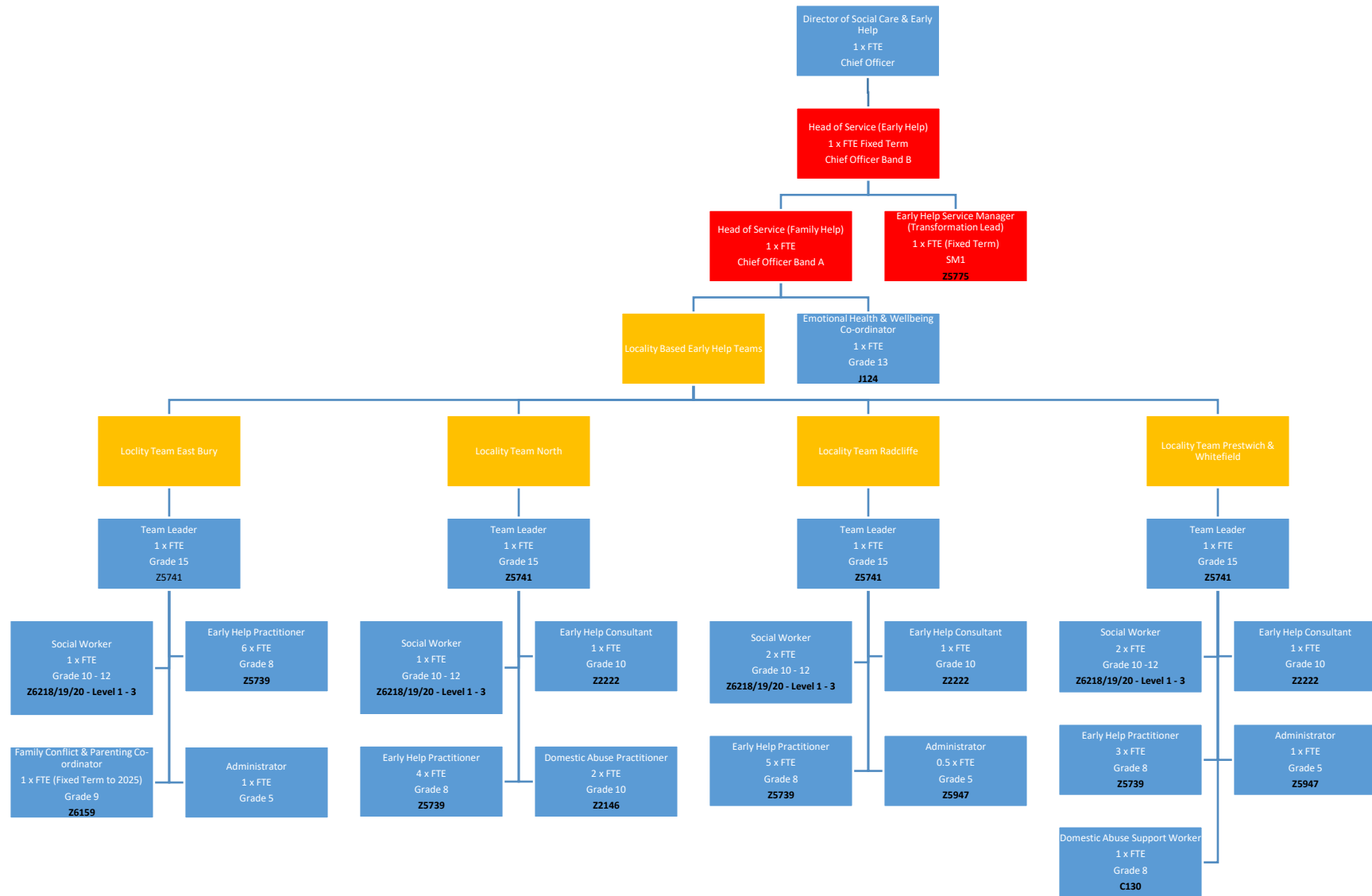
Social Care & Early Help: CASS & Leaving Care



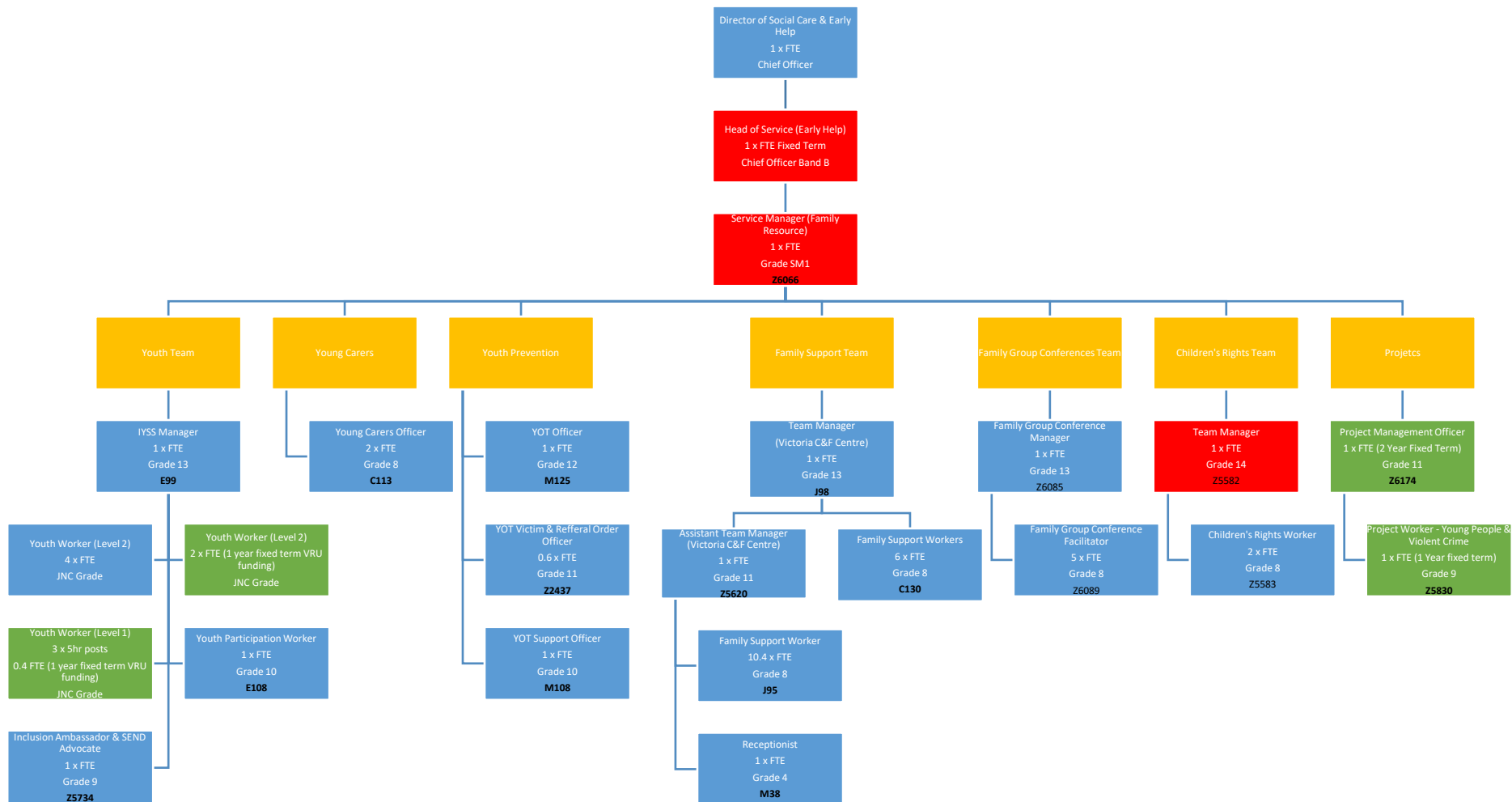
Social Care & Early Help: My Home



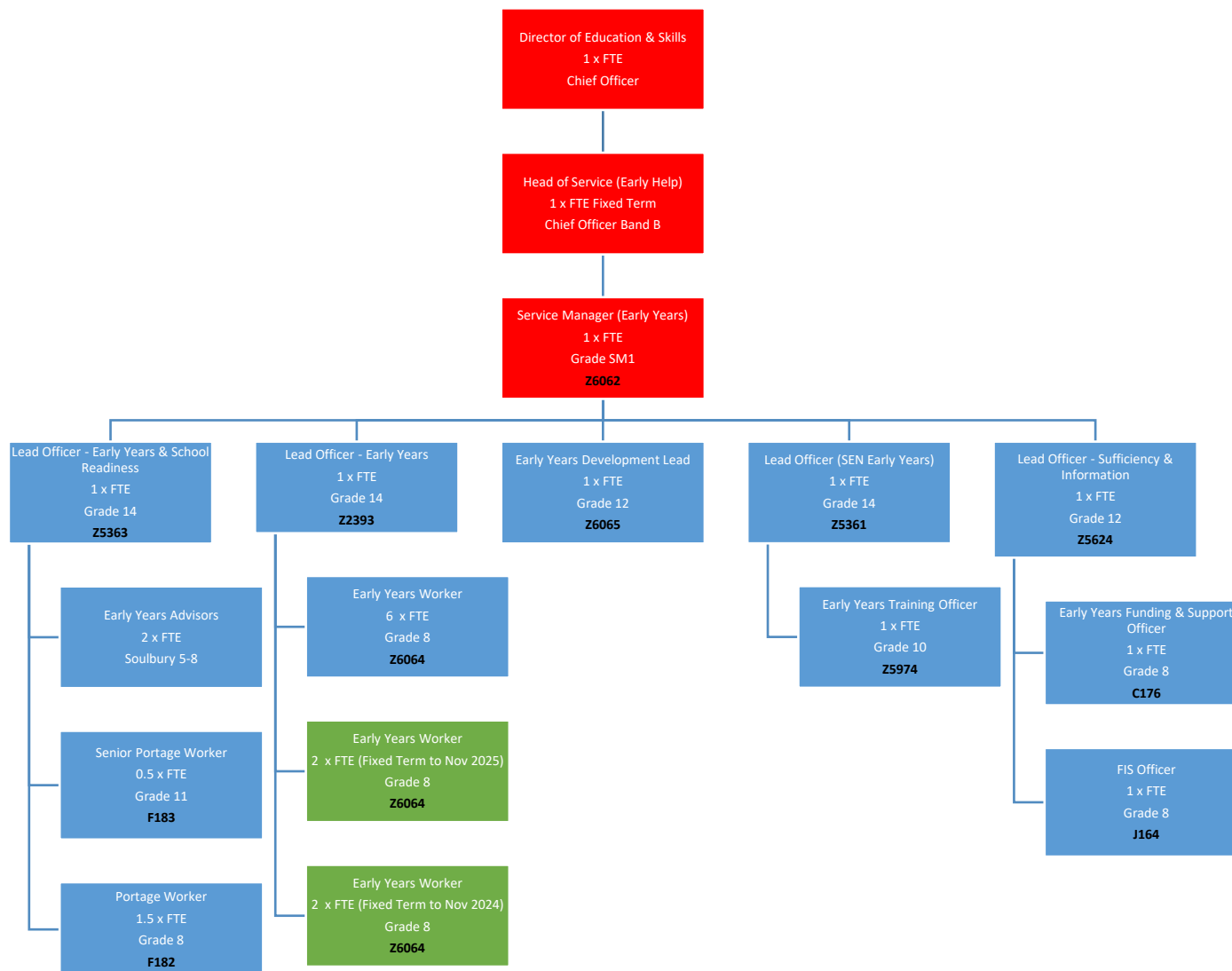
Social Care & Early Help: Early Help (Family Help Locality Based Teams)



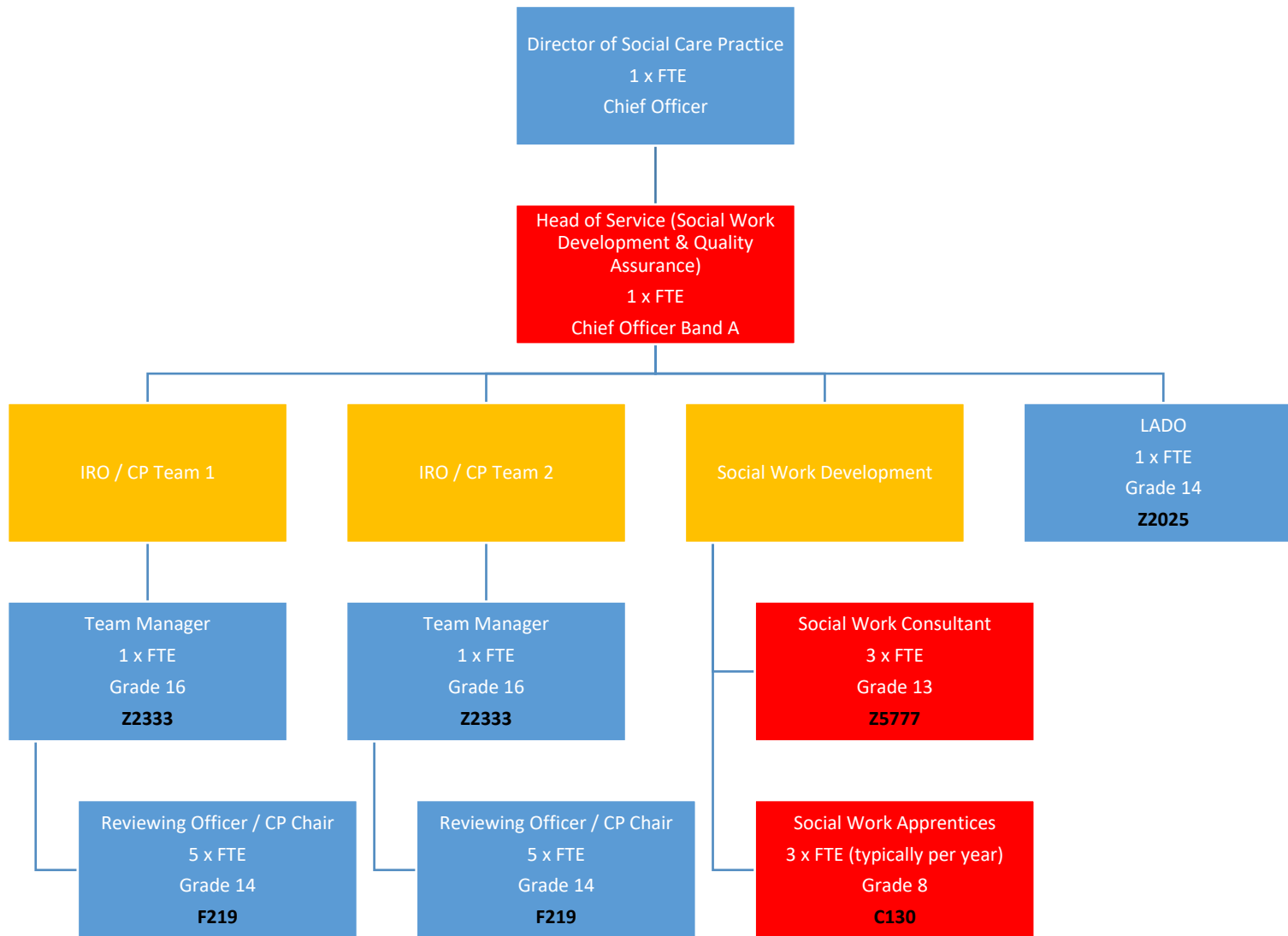
Social Care & Early Help: Early Help (Family Resource)



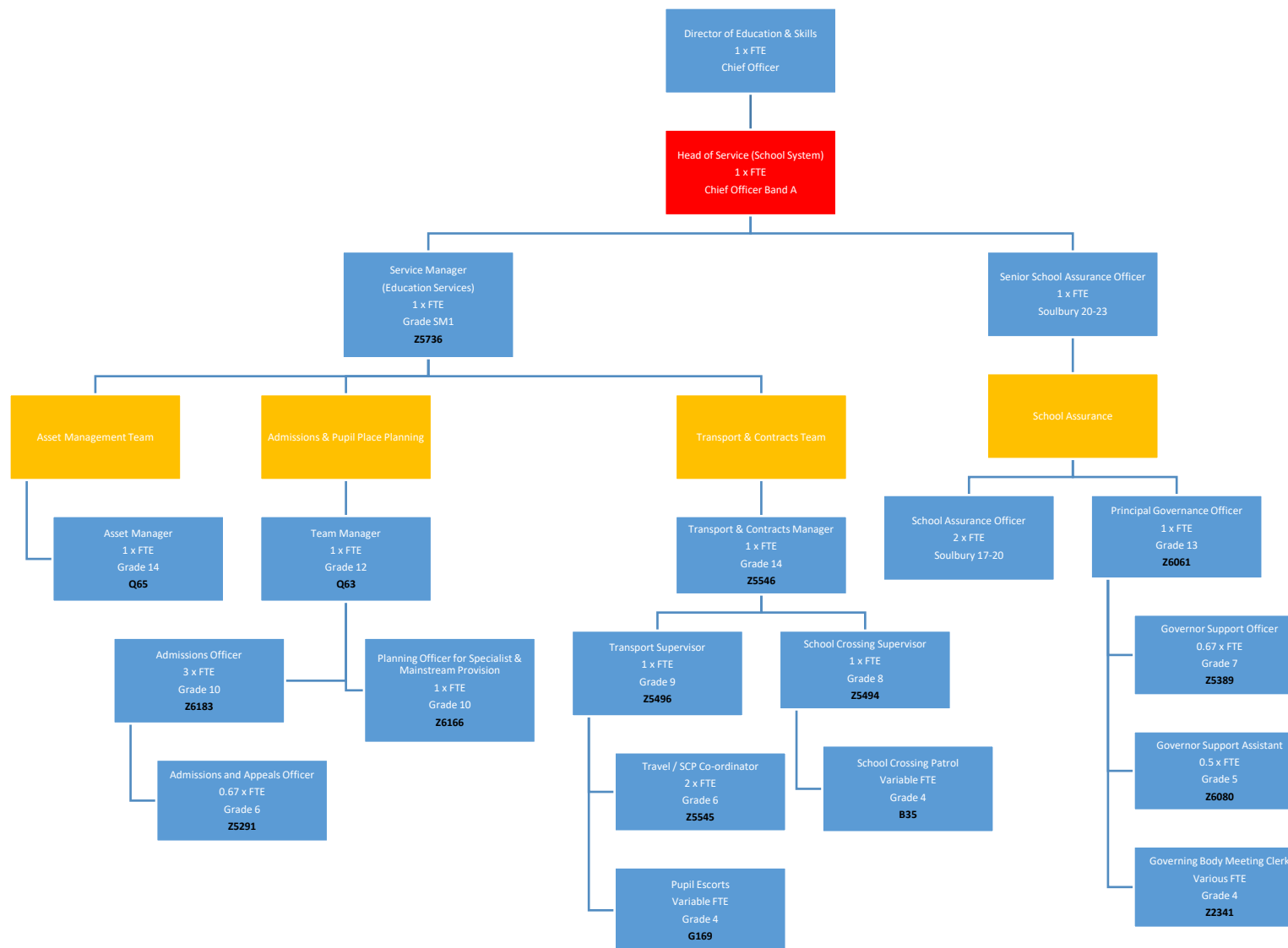
Social Care & Early Help: Early Years



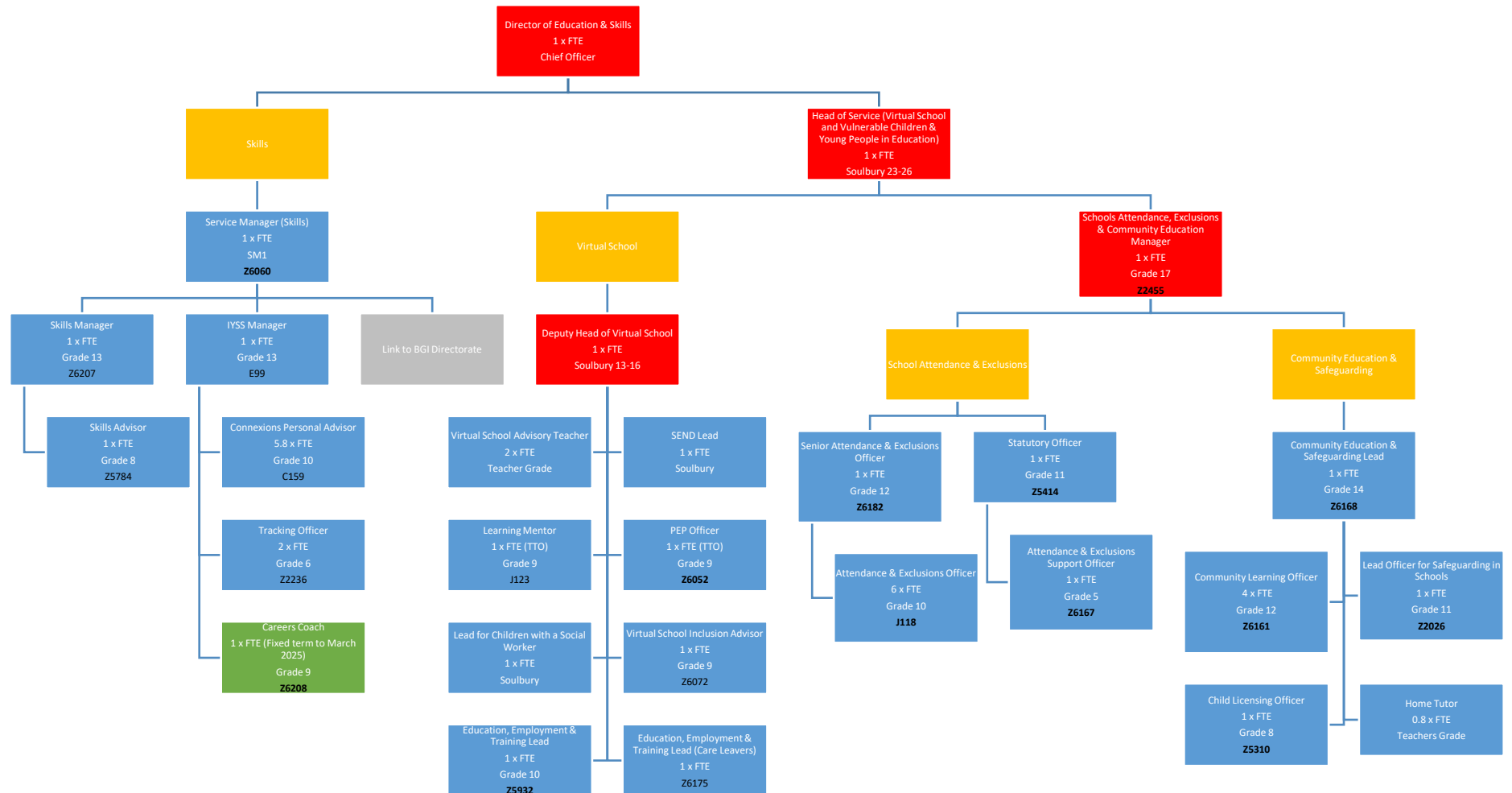
Social Care & Early Help: Social Work Development & Quality Assurance



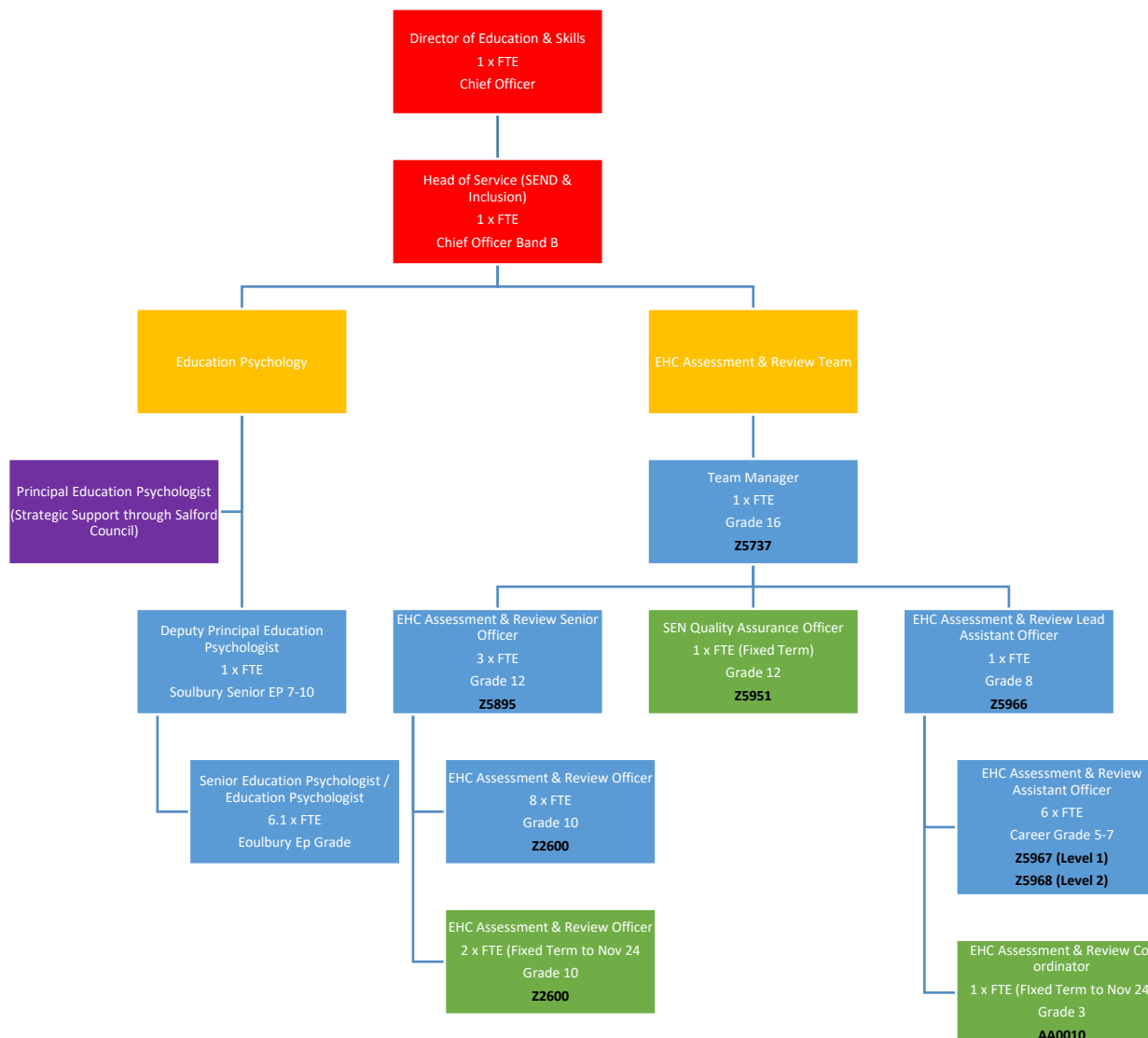
Education & Skills: School System



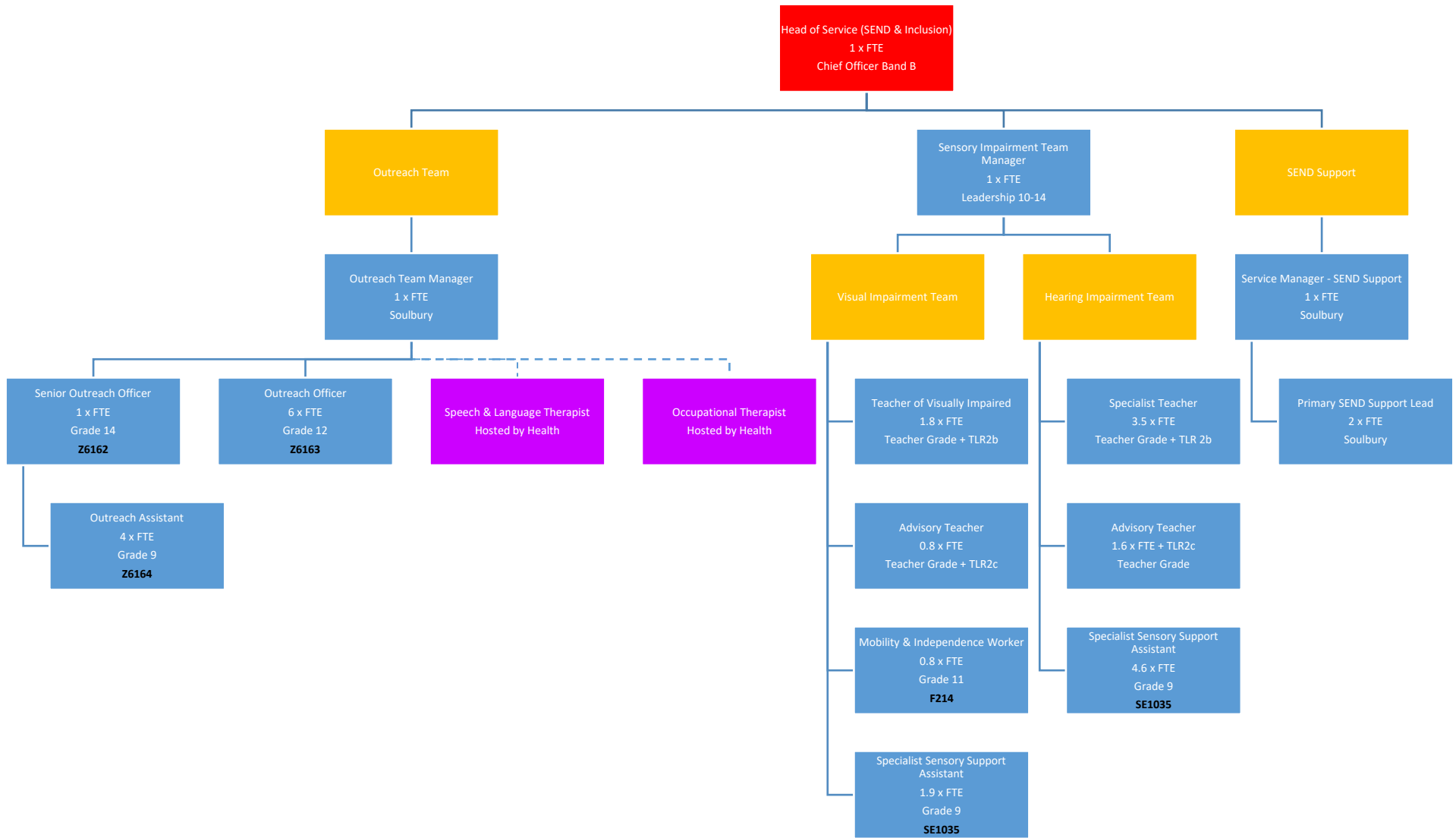
Education & Skills: Education Safeguarding & Skills



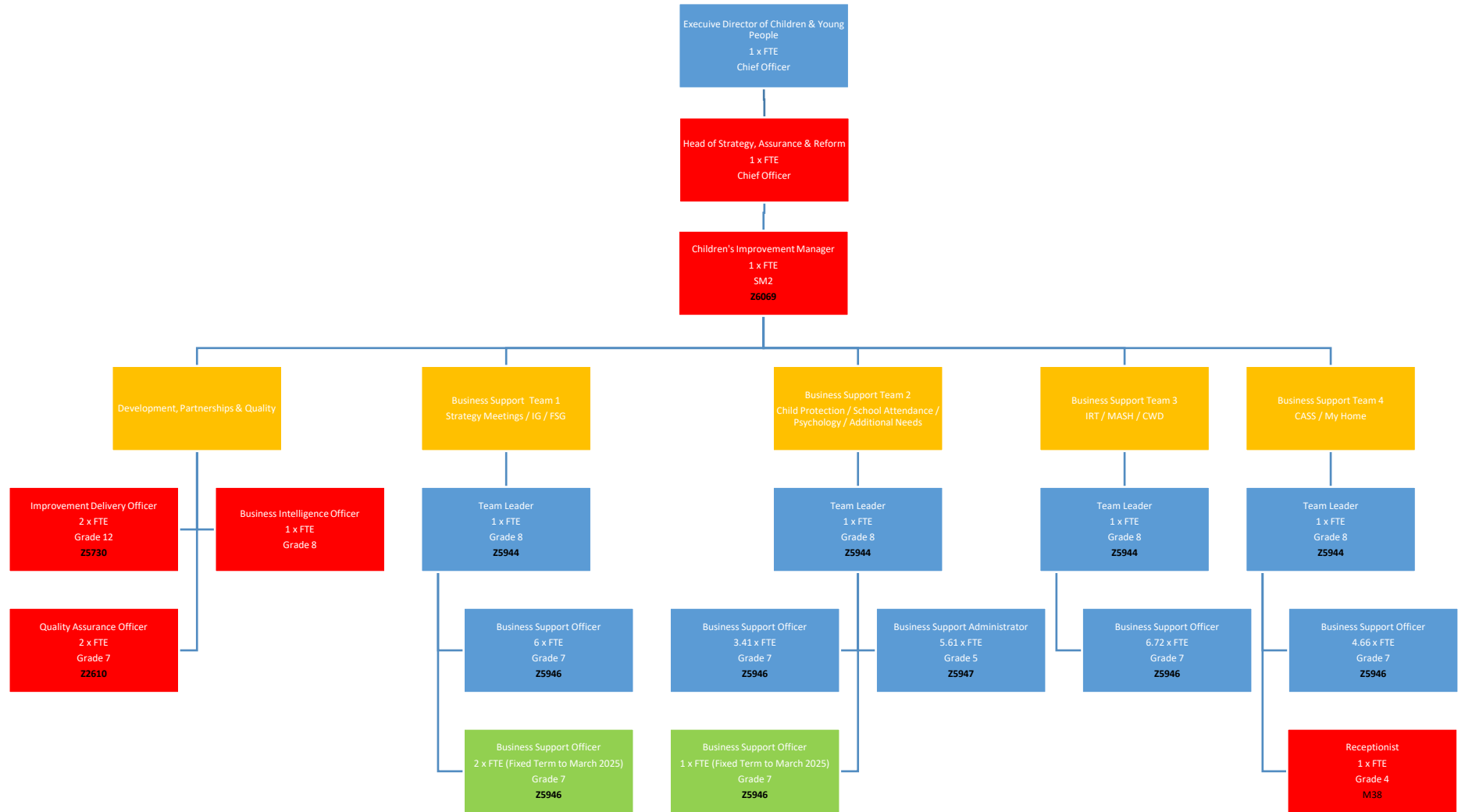
Education & Skills: Special Educational Needs



Education & Skills: Inclusion & Disadvantaged Children



Strategy, Assurance & Reform



Total Business Support Establishment:
 4 x FTE Team Leaders, 20.79 x FTE Business Support Officers,
 5.61 x FTE Administrators to deploy flexibly across teams plus
 1 x FTE receptionist

Children's Commissioning

